



Shildan's Guide to the West Coast

UCLA Evelyn & Mo Ostin Music Center | Los Angeles, CA
Kevin Daly Architects

Tykeson Hall University of Oregon | Eugene, OR
OFFICE 52 Architecture / Rowell Brokaw

San Ysidro - U.S Land Port of Entry | San Diego, CA
Miller Hull Partnership, LLC / Stantec

Los Angeles Mission College | Sylmar, CA
Quatro Design Group

Design your Passion. Build with Ours.

Shildan provides advanced terracotta façade products and systems to the architectural community. 🏗️ Since introducing terracotta rainscreen to the US market in 1998, Shildan has completed over 300 institutional projects, demonstrating an exceptional ability to design and engineer systems to meet the needs of today's high performing façades.

Our experienced technical team offers early design guidance to architects, engineers & owners, design build services and technical assistance. 🏗️ In addition, we specialize in developing custom colors & shapes to meet each project's unique design intent. Shildan offers premium service. 🏗️ Our in-house team of project managers & engineers, located in our corporate headquarters in Mount Laurel, New Jersey, offers the highest standard of products, design support & solutions, throughout the life of a project, from concept to completion.



Pomona College Student Housing Pomona, CA
EYRC Architects



270 Brannan Street San Francisco, CA
PFAU/Long Architecture



SHILDAN
GROUP

Corporate Headquarters
2047 Briggs Road
Mount Laurel, New Jersey 08054
office 215 525 4510 | info@shildan.com
www.shildan.com

Shildan West Coast Featured Projects

Adobe Systems Offices
625 Townsend St, San Francisco, CA 94103
LMS Architects

1 Kearny Street
Market & Kearny Street, San Francisco, CA 94108
The Office of Charles F. Boszies

121 Golden Gate Ave
121 Golden Gate Ave, San Francisco, CA 94102
Kevin Daly Architects

270 Brannan Street
270 Brannan Street, San Francisco, CA 94107
PFAU/Long Architecture

345 Brannan Street
345 Brannan St, San Francisco, CA 94107
The Office of Charles F. Boszies

4120 Jefferson (under construction)
4120 West Jefferson Blvd. Los Angeles, CA 90016
Lorcan O'Herlihy Architects

840 Brannan Street (REI)
840 Brannan Street San Francisco, CA 94103
Lundberg Design

Broadway Tower
1455 SW Broadway Portland, OR 97201
GBD Architects

Camp Pendelton Naval Hospital
200 Mercy Circle, Oceanside, CA 92058
HKS Architects, Inc.

Coresite Data Center
2972 Stender Way, Santa Clara, CA 95054
DCM Architects

Eisenhower George and Julia Argyros Health Center
45280 Seeley Dr, La Quinta, CA 92253
Boulder Architects

Gateway of the Pacific
1000 Gateway Blvd., San Francisco, CA 94080
Flad Architects

Golden West College, Student Services Center
Huntington Beach, CA 92647
tBP Architecture

Hotel SLO
877 Palm Street, San Luis Obispo, CA 93401
Gensler

Jill and John Freidenrich Center for Translational Research at Stanford University
800 Welch Rd, Palo Alto, CA 94304
WRNS Studio

Levine Residence
Malibu Road, Malibu, CA 90263
David Grey Architects

Los Angeles Mission College - Family & Consumer Studies Building & Media Arts Center
13356 Eldridge Avenue, Sylmar, CA 91342
Quatro Design Group

Mercy Corps World Headquarters
43 SW Naito Pkwy, Portland, OR 97204
Thomas Hacker Architect

Miramar College - Police Sub Station
10440 Black Mountain Road, San Diego, CA 92126
Harley Ellis Devereaux

NOAA Southwest Fisheries Science Center
8901 La Jolla Shores Drive, La Jolla, CA 92037
Gould Evans / HDR

P966 Tradet One - Combat Training Tank Complex
Coastal Campus, Coronado, CA
RJC Architects

Pomona College Student Housing
550 North College Way, Claremont, CA 91711
EYRC Architects

Portland Community College Willow Creek Center
241 SW Edgeway Dr, Hillsboro, OR 97006
GBD Architects

San Diego County Medical Examiner's Office
5555 Overland Avenue, San Diego, CA 92123
Harley Ellis Devereux

San Francisco Firehouse #3
SFO Airport, San Francisco, CA 94128
Shah Kawasaki Architects / Yamamar Design

San Francisco Water Treatment Plant
San Francisco, CA | City of San Francisco

San Ysidro - U.S. Land Port of Entry Phase 1
720 E San Ysidro Blvd, San Diego, CA 92173
The Miller Hull Partnership, LLC

San Ysidro - U.S. Land Port of Entry Phase 2
720 E San Ysidro Blvd, San Diego, CA 92173
Stantec

Santa Clara Mission College Main Building
3000 Mission College Blvd, Santa Clara, CA 95054
Lionakis

SLAC National Accelerator Laboratory - Research Support Building
2575 Sand Hill Road, Menlo Park, CA 94025
WRNS Studio

SoM C.J. Huang Building
780 Welch Rd, Palo Alto, CA 94304
WRNS Studio

SOMA District Office Building
345 Brannan St, San Francisco, CA 94107
The Office of Charles F. Boszies

South Orange County College District - Health Sciences Building
2800 Marguerite Pkwy, Mission Viejo, CA 92692
LPA Architects

Spring Road House
Spring Road, Marin County, California 94957
EYRC Architects

St. Paul's Episcopal Middle School
262 Grand Ave, Oakland, CA 94610
PFAU / Long Architecture

Surfside Residence
1 Surfside Unit C, Surfside, CA 92692
BBG Architects

The Glassworks
207 King Street, San Francisco, CA 94107
Brand Allen Architects

Tykeson Hall University of Oregon
E 13th Ave, Eugene, OR 97403
OFFICE 52 Architecture / Rowell Brokaw

UC SantaBarbara Henley Hall - Institute for Energy Efficiency
Santa Barbara, CA 93106 | Kieran Timberlake

UCLA Evelyn & Mo Ostin Music Center
445 Charles E Young Dr E, Los Angeles, CA
Kevin Daly Architects

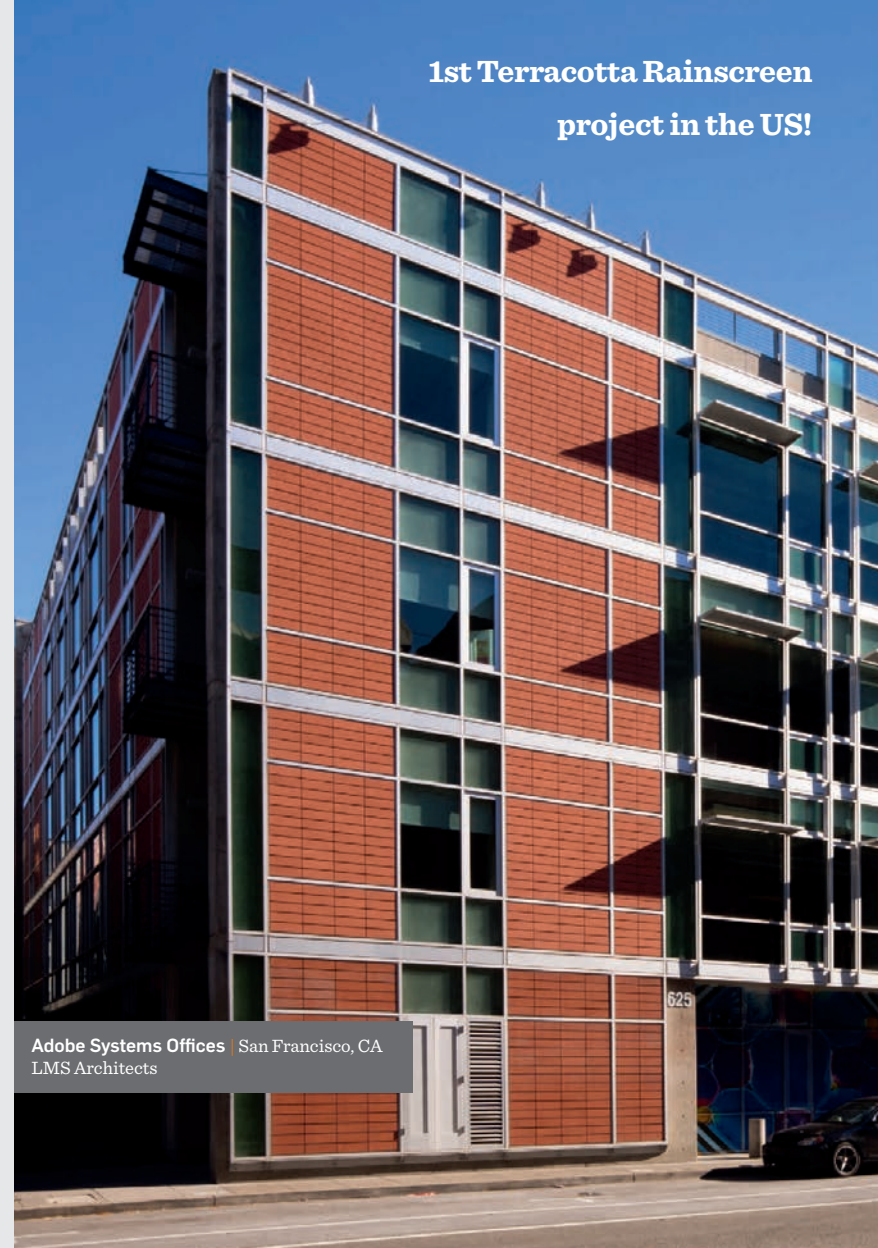
University of California Santa Barbara - Facilities Management Building
Santa Barbara, CA 93106 | Sasaki Architects

University of the Pacific - McGeorge School of Law, Gordon D. Schaber Law Library
3200 Fifth Avenue, Sacramento, CA 99817
PFAU / Long Architecture

VA Palo Alto Health Care System - Palo Alto Division: Radiology
3801 Miranda Ave, Palo Alto, CA 94304
Smithgroup

VA Palo Alto Polytrauma & Blind Rehabilitation Center
3801 Miranda Ave, Palo Alto, CA 94304
Smithgroup

VA Palo Alto Veterinary Research
3801 Miranda Ave, Palo Alto, CA 94304
Smithgroup



1st Terracotta Rainscreen
project in the US!

Adobe Systems Offices San Francisco, CA
LMS Architects